



## **AP<sup>®</sup> Japanese Language and Culture 2013 Free-Response Questions**

### **About the College Board**

The College Board is a mission-driven not-for-profit organization that connects students to college success and opportunity. Founded in 1900, the College Board was created to expand access to higher education. Today, the membership association is made up of more than 6,000 of the world's leading educational institutions and is dedicated to promoting excellence and equity in education. Each year, the College Board helps more than seven million students prepare for a successful transition to college through programs and services in college readiness and college success — including the SAT<sup>®</sup> and the Advanced Placement Program<sup>®</sup>. The organization also serves the education community through research and advocacy on behalf of students, educators, and schools.

© 2013 The College Board. College Board, Advanced Placement Program, AP, AP Central, SAT, and the acorn logo are registered trademarks of the College Board. Admitted Class Evaluation Service and inspiring minds are trademarks owned by the College Board. All other products and services may be trademarks of their respective owners. Visit the College Board on the Web: [www.collegeboard.org](http://www.collegeboard.org). Permission to use copyrighted College Board materials may be requested online at: [www.collegeboard.org/inquiry/cbpermit.html](http://www.collegeboard.org/inquiry/cbpermit.html).

**Visit the College Board on the Web: [www.collegeboard.org](http://www.collegeboard.org).**

**AP Central is the official online home for the AP Program: [apcentral.collegeboard.org](http://apcentral.collegeboard.org).**



## 2013 AP® JAPANESE LANGUAGE AND CULTURE FREE-RESPONSE QUESTIONS

### Overview

Key screen images from the free-response section of the AP Japanese Language and Culture Exam are included in this document. The actual exam includes other screens, such as message boxes and help screens, which students may view while taking the exam. On screens where the “Show Time” button appears, students have the option to display the time remaining to complete the task. The exam screens are dynamic, with changing information (e.g., audio progress bar, count-down clock), while the screen images that follow are static, representing a particular moment during the exam.

This document also includes scripts for recorded material that students heard during the exam. However, recording scripts are not provided for directions screens, where the audio portion matches verbatim the text appearing on the screen.

## Writing Part Directions

You will participate in a simulated exchange of text-chat messages and write an article.

The input method for typing Japanese text is the Microsoft IME. This method allows you to type in different modes, which you can select from the drop-down list as necessary. Hiragana mode (あ) allows you to produce hiragana and to convert to kanji and katakana. F-W Katakana (Full-width Katakana) mode (カ) allows you to produce katakana. Direct Input mode (A) allows you to produce English letters. Note that you should use English letters only in cases where they would normally be used in authentic Japanese writing. Do not use romaji or English as a substitute for words that should be written in Japanese.

For both tasks, you will have a specific amount of response time. A clock at the top of the screen will show you how much time is remaining to write your response.

When the response time has ended, you will automatically go on to the next question. You cannot return to previous questions.

### Writing Part Directions: Text Chat

You will participate in a simulated exchange of text-chat messages. Each time it is your turn to write, you will have 90 seconds to respond. You should respond as fully and as appropriately as possible.

There will be six times when it is your turn to write.

You will now begin this part.

# 2013 AP® JAPANESE LANGUAGE AND CULTURE FREE-RESPONSE QUESTIONS

## AP Japanese Language & Culture - Writing



Question 1 of 7

SHOW TIME

HELP ?

Directions: You will participate in a simulated exchange of text-chat messages. Each time it is your turn to write, you will have 90 seconds to respond. You should respond as fully and as appropriately as possible.

You will have a conversation with Hiro Kawada, your pen pal, about commuting to high school.

Respond.

あなたは通学に、どのくらい時間が、かかりますか？

Cut Paste Undo Redo Hide Char. Count 0 Hiragana

# 2013 AP® JAPANESE LANGUAGE AND CULTURE FREE-RESPONSE QUESTIONS

AP Japanese Language & Culture - Writing

CollegeBoard

Question 2 of 7

SHOW TIME

HELP ?

Directions: You will participate in a simulated exchange of text-chat messages. Each time it is your turn to write, you will have 90 seconds to respond. You should respond as fully and as appropriately as possible.

You will have a conversation with Hiro Kawada, your pen pal, about commuting to high school.

Respond.

ふつうは、どうやって学校に行くんですか。

Cut Paste Undo Redo Hide Char. Count 0 Hiragana



# 2013 AP® JAPANESE LANGUAGE AND CULTURE FREE-RESPONSE QUESTIONS

## AP Japanese Language & Culture - Writing

HELP ?



Question 4 of 7

SHOW TIME

Directions: You will participate in a simulated exchange of text-chat messages. Each time it is your turn to write, you will have 90 seconds to respond. You should respond as fully and as appropriately as possible.

You will have a conversation with Hiro Kawada, your pen pal, about commuting to high school.

Give your opinion.

高校生が車を運転して学校に行くことについて、どう思いますか。

Cut Paste Undo Redo Hide Char. Count 0 Hiragana



# 2013 AP® JAPANESE LANGUAGE AND CULTURE FREE-RESPONSE QUESTIONS

## AP Japanese Language & Culture - Writing

HELP ?



Question 5 of 7

SHOW TIME

Directions: You will participate in a simulated exchange of text-chat messages. Each time it is your turn to write, you will have 90 seconds to respond. You should respond as fully and as appropriately as possible.

You will have a conversation with Hiro Kawada, your pen pal, about commuting to high school.

Give at least one example.

私は通学するときに本を読みますが、あなたはどんなことをしますか。

Cut Paste Undo Redo Hide Char. Count 0 Hiragana

# 2013 AP® JAPANESE LANGUAGE AND CULTURE FREE-RESPONSE QUESTIONS

**AP Japanese Language & Culture - Writing** HELP ?

CollegeBoard Question 6 of 7 SHOW TIME

Directions: You will participate in a simulated exchange of text-chat messages. Each time it is your turn to write, you will have 90 seconds to respond. You should respond as fully and as appropriately as possible.

You will have a conversation with Hiro Kawada, your pen pal, about commuting to high school.

Ask a specific question.

日本の高校生の通学について、何か聞いてください。

Cut Paste Undo Redo Hide Char. Count 0 Hiragana

### Writing Part Directions: Compare and Contrast Article

You will be asked to write in Japanese for a specific purpose and for a specific audience. You should write in as complete a manner as possible, taking into account the purpose and the audience described.

You will now begin this part.

# 2013 AP® JAPANESE LANGUAGE AND CULTURE FREE-RESPONSE QUESTIONS

## AP Japanese Language & Culture - Writing



Question 7 of 7

SHOW TIME



Directions: You will be asked to write in Japanese for a specific purpose and for a specific audience. You should write in as complete a manner as possible, taking into account the purpose and the audience described.

You are writing an article for the student newspaper of your sister school in Japan. Write an article in which you compare and contrast typing in Japanese and handwriting in Japanese. Based on your personal experience, describe at least THREE aspects of each and highlight the similarities and differences between typing in Japanese and handwriting in Japanese. Also, state your preference and give reasons for it.

Your article should be 300 to 400 characters or longer. Use the *desu/masu* or *da* (plain) style, but use one style consistently. Also, use kanji wherever kanji from the AP Japanese kanji list is appropriate. You have 20 minutes to write.

Cut Paste Undo Redo Hide Char. Count 0 Hiragana



## Speaking Part Directions

You will participate in a simulated conversation and make a presentation.

For the presentation, you will have a specific amount of preparation time. During the preparation time, a clock will show you how much time is remaining.

For both tasks, you will have a specific amount of response time. During the response time, a clock will show you how much time is remaining.

When the response time has ended, you will automatically go on to the next question. You cannot return to previous questions.

Your cue to start speaking will always be this tone.



### Speaking Part Directions: Conversation

You will participate in a simulated conversation. Each time it is your turn to speak, you will have 20 seconds to record. You should respond as fully and as appropriately as possible.

There will be four times when it is your turn to speak.

You will now begin this part.

# 2013 AP® JAPANESE LANGUAGE AND CULTURE FREE-RESPONSE QUESTIONS

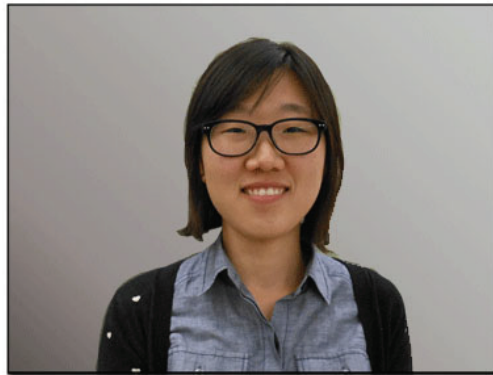
## AP Japanese Language & Culture - Speaking



Question 1 of 5

Directions: You will participate in a simulated conversation. Each time it is your turn to speak, you will have 20 seconds to record. You should respond as fully and as appropriately as possible.

You will have a conversation with Yumiko Tanaka, a Japanese student, about working.



RESPONSE TIME

00 : 00 : 00

Note: Students saw the exam screen above for each of the individual questions that together compose this task. Only the screen image for the first question is shown here, but during the exam, each of the screens indicated the number of the question the students were responding to.

## 2013 AP® JAPANESE LANGUAGE AND CULTURE FREE-RESPONSE QUESTIONS

The following text is the recording script for the audio portion of the task shown in the previous screen image. Students heard this audio during the exam administration, but this text does not appear in the exam and is provided here for reference only.

**N:** You will have a conversation with Yumiko Tanaka, a Japanese student, about working.

### Speaking Question 1 of 5

**WA:** 今日は、高校生のアルバイトについてお聞きしたいと思います。よろしくお願ひします。

[TONE]

(20 seconds)

### Speaking Question 2 of 5

**WA:** あなたの高校の生徒は、どんなアルバイトをしていますか。

[TONE]

(20 seconds)

### Speaking Question 3 of 5

**WA:** 高校生がアルバイトをするのとしないのと、どちらがいいと思いますか。

[TONE]

(20 seconds)

### Speaking Question 4 of 5

**WA:** アルバイトをしたい人に、何かアドバイスしてください。

[TONE]

(20 seconds)



### Speaking Part Directions: Cultural Perspective Presentation

Imagine that you are making an oral presentation to your Japanese class. First, you will read and hear the topic for your presentation. You will have 4 minutes to prepare your presentation. Then you will have 2 minutes to record your presentation. Your presentation should be as full as possible.

You will now begin this part.

# 2013 AP® JAPANESE LANGUAGE AND CULTURE FREE-RESPONSE QUESTIONS

## AP Japanese Language & Culture - Speaking



### Question 5 of 5

Directions: Imagine that you are making an oral presentation to your Japanese class. First, you will read and hear the topic for your presentation. You will have 4 minutes to prepare your presentation. Then you will have 2 minutes to record your presentation. Your presentation should be as full as possible.

Present your own view or perspective on annual Japanese cultural events. Discuss at least FIVE aspects or examples of annual Japanese cultural events.

Begin with an appropriate introduction, give details, explain your own view or perspective, and end with a concluding remark.

Preparation Time: 240 Seconds  
Response Time: 120 Seconds

**PREPARATION TIME**

**00 : 04 : 00**

## 2013 AP® JAPANESE LANGUAGE AND CULTURE FREE-RESPONSE QUESTIONS

The following text is the recording script for the audio portion of the task shown in the previous screen image. Students heard this audio during the exam administration, but this text does not appear in the exam and is provided here for reference only.

### Speaking Question 5 of 5

**N:** Present your own view or perspective on annual Japanese cultural events. Discuss at least FIVE aspects or examples of annual Japanese cultural events.

Begin with an appropriate introduction, give details, explain your own view or perspective, and end with a concluding remark.

**N:** You have four minutes to prepare your presentation.

(240 seconds)

**N:** You have two minutes to record your presentation.

[TONE]

(120 seconds)