



## **AP<sup>®</sup> Japanese Language and Culture 2012 Free-Response Questions**

### **About the College Board**

The College Board is a mission-driven not-for-profit organization that connects students to college success and opportunity. Founded in 1900, the College Board was created to expand access to higher education. Today, the membership association is made up of more than 5,900 of the world's leading educational institutions and is dedicated to promoting excellence and equity in education. Each year, the College Board helps more than seven million students prepare for a successful transition to college through programs and services in college readiness and college success — including the SAT<sup>®</sup> and the Advanced Placement Program<sup>®</sup>. The organization also serves the education community through research and advocacy on behalf of students, educators, and schools.

© 2012 The College Board. College Board, Advanced Placement Program, AP, AP Central, SAT, and the acorn logo are registered trademarks of the College Board. Admitted Class Evaluation Service and inspiring minds are trademarks owned by the College Board. All other products and services may be trademarks of their respective owners. Visit the College Board on the Web: [www.collegeboard.org](http://www.collegeboard.org). Permission to use copyrighted College Board materials may be requested online at: [www.collegeboard.org/inquiry/cbpermit.html](http://www.collegeboard.org/inquiry/cbpermit.html).

**Visit the College Board on the Web: [www.collegeboard.org](http://www.collegeboard.org).**

**AP Central is the official online home for the AP Program: [apcentral.collegeboard.org](http://apcentral.collegeboard.org).**



## 2012 AP<sup>®</sup> JAPANESE LANGUAGE AND CULTURE FREE-RESPONSE QUESTIONS

### Overview

Key screen images from the free-response section of the AP Japanese Language and Culture Exam are included in this document. The actual exam includes other screens, such as message boxes and help screens, which students may view while taking the exam. On screens where the “Show Time” button appears, students have the option to display the time remaining to complete the task. The exam screens are dynamic, with changing information (e.g., audio progress bar, count-down clock), while the screen images that follow are static, representing a particular moment during the exam.

This document also includes scripts for recorded material that students heard during the exam. However, recording scripts are not provided for directions screens, where the audio portion matches verbatim the text appearing on the screen.

## Writing Part Directions

You will participate in a simulated exchange of text-chat messages and write an article.

The input method for typing Japanese text is the Microsoft IME. This method allows you to type in different modes, which you can select from the drop-down list as necessary. Hiragana mode (あ) allows you to produce hiragana and to convert to kanji and katakana. F-W Katakana (Full-width Katakana) mode (カ) allows you to produce katakana. Direct Input mode (A) allows you to produce English letters. Note that you should use English letters only in cases where they would normally be used in authentic Japanese writing. Do not use romaji or English as a substitute for words that should be written in Japanese.

For both tasks, you will have a specific amount of response time. A clock at the top of the screen will show you how much time is remaining to write your response.

When the response time has ended, you will automatically go on to the next question. You cannot return to previous questions.

### Writing Part Directions: Text Chat

You will participate in a simulated exchange of text-chat messages. Each time it is your turn to write, you will have 90 seconds to respond. You should respond as fully and as appropriately as possible.

There will be six times when it is your turn to write.

You will now begin this part.

# 2012 AP® JAPANESE LANGUAGE AND CULTURE FREE-RESPONSE QUESTIONS

## AP Japanese Language & Culture - Writing



Question 1 of 7

SHOW TIME



Directions: You will participate in a simulated exchange of text-chat messages. Each time it is your turn to write, you will have 90 seconds to respond. You should respond as fully and as appropriately as possible.

You will have a conversation with Taro Yamamoto, a Japanese high school student, about sports.

Describe specific examples.

今日はスポーツについてお聞きしたいんですが、あなたの高校で人気があるのはどんなスポーツですか。

Cut Paste Undo Redo Hide Char. Count 0 Hiragana

# 2012 AP® JAPANESE LANGUAGE AND CULTURE FREE-RESPONSE QUESTIONS

**AP Japanese Language & Culture - Writing** HELP ?

CollegeBoard Question 2 of 7 SHOW TIME

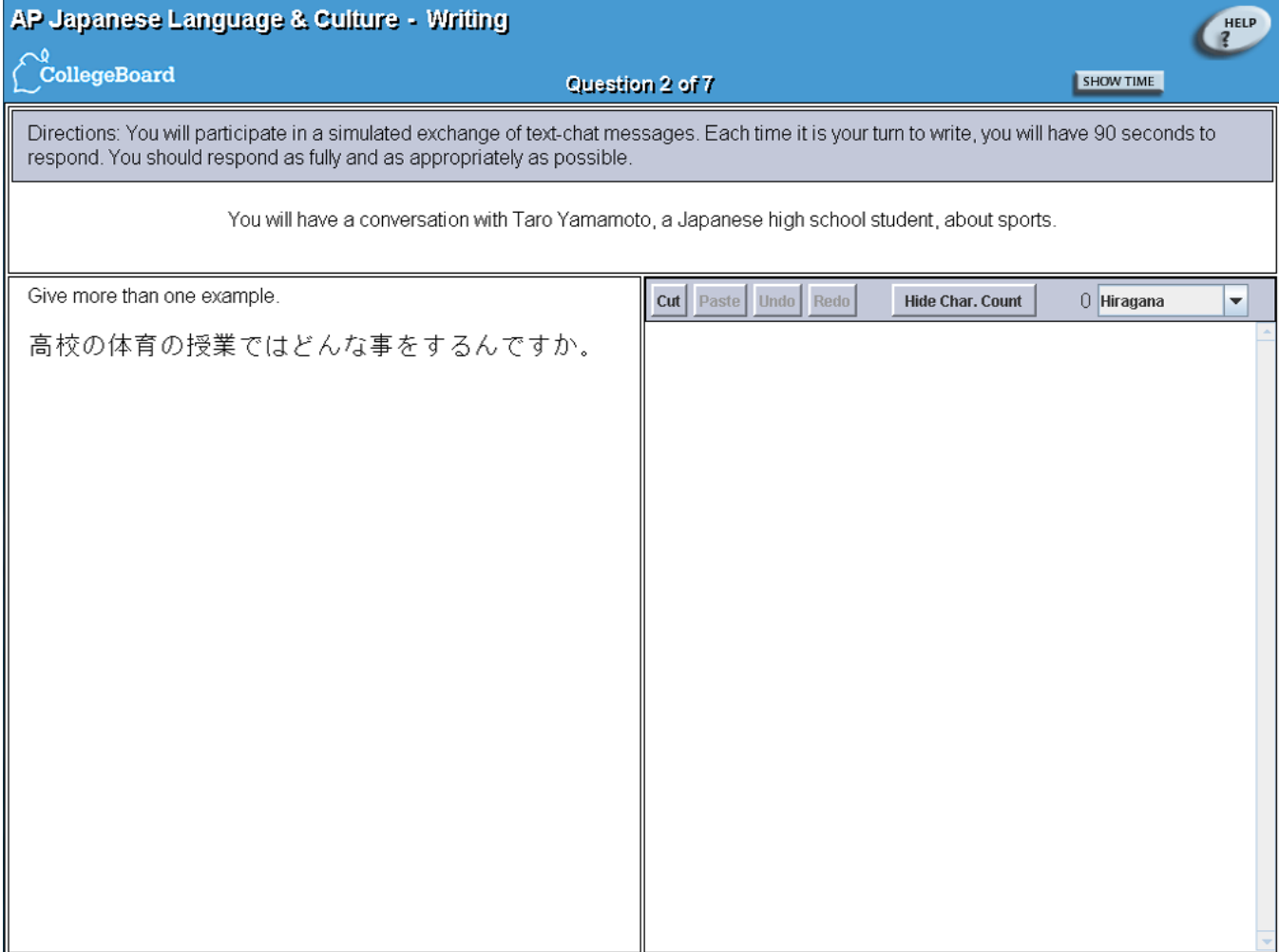
Directions: You will participate in a simulated exchange of text-chat messages. Each time it is your turn to write, you will have 90 seconds to respond. You should respond as fully and as appropriately as possible.

You will have a conversation with Taro Yamamoto, a Japanese high school student, about sports.

Give more than one example.

高校の体育の授業ではどんな事をするんですか。

Cut Paste Undo Redo Hide Char. Count 0 Hiragana



# 2012 AP® JAPANESE LANGUAGE AND CULTURE FREE-RESPONSE QUESTIONS

**AP Japanese Language & Culture - Writing** HELP ?

CollegeBoard Question 3 of 7 SHOW TIME

Directions: You will participate in a simulated exchange of text-chat messages. Each time it is your turn to write, you will have 90 seconds to respond. You should respond as fully and as appropriately as possible.

You will have a conversation with Taro Yamamoto, a Japanese high school student, about sports.

Give your preference.

ところで、体育の授業と日本語の授業とどちらのほうが好きですか。

Cut Paste Undo Redo Hide Char. Count 0 Hiragana

2012 AP® JAPANESE LANGUAGE AND CULTURE FREE-RESPONSE QUESTIONS

AP Japanese Language & Culture - Writing

CollegeBoard

Question 4 of 7

SHOW TIME

HELP ?

Directions: You will participate in a simulated exchange of text-chat messages. Each time it is your turn to write, you will have 90 seconds to respond. You should respond as fully and as appropriately as possible.

You will have a conversation with Taro Yamamoto, a Japanese high school student, about sports.

Give some examples.

そうですか。日本では、どんなスポーツが人気があると思いますか。

Cut Paste Undo Redo Hide Char. Count 0 Hiragana



# 2012 AP® JAPANESE LANGUAGE AND CULTURE FREE-RESPONSE QUESTIONS

**AP Japanese Language & Culture - Writing** HELP ?

CollegeBoard Question 5 of 7 SHOW TIME

Directions: You will participate in a simulated exchange of text-chat messages. Each time it is your turn to write, you will have 90 seconds to respond. You should respond as fully and as appropriately as possible.

You will have a conversation with Taro Yamamoto, a Japanese high school student, about sports.

Justify your opinion.

スポーツをすることは大切だと思いますか。どうしてですか。

Cut Paste Undo Redo Hide Char. Count 0 Hiragana

# 2012 AP® JAPANESE LANGUAGE AND CULTURE FREE-RESPONSE QUESTIONS

AP Japanese Language & Culture - Writing

CollegeBoard

Question 6 of 7

SHOW TIME

HELP ?

Directions: You will participate in a simulated exchange of text-chat messages. Each time it is your turn to write, you will have 90 seconds to respond. You should respond as fully and as appropriately as possible.

You will have a conversation with Taro Yamamoto, a Japanese high school student, about sports.

Ask a question.

最後に、日本の体育の授業やスポーツについて何か質問してください。

Cut Paste Undo Redo Hide Char. Count 0 Hiragana

### Writing Part Directions: Compare and Contrast Article

You will be asked to write in Japanese for a specific purpose and for a specific audience. You should write in as complete a manner as possible, taking into account the purpose and the audience described.

You will now begin this part.

# 2012 AP® JAPANESE LANGUAGE AND CULTURE FREE-RESPONSE QUESTIONS

## AP Japanese Language & Culture - Writing



Question 7 of 7

SHOW TIME



Directions: You will be asked to write in Japanese for a specific purpose and for a specific audience. You should write in as complete a manner as possible, taking into account the purpose and the audience described.

You are writing an article for the student newspaper of your sister school in Japan. Write an article in which you compare and contrast spending time with friends and spending time with family. Based on your personal experience, describe at least THREE aspects of each and highlight the similarities and differences between spending time with friends and spending time with family. Also, state your preference and give reasons for it.

Your article should be 300 to 400 characters or longer. Use the *desu/masu* or *da* (plain) style, but use one style consistently. Also, use kanji wherever kanji from the AP Japanese kanji list is appropriate. You have 20 minutes to write.

Cut Paste Undo Redo Hide Char. Count 0 Hiragana



## Speaking Part Directions

You will participate in a simulated conversation and make a presentation.

For the presentation, you will have a specific amount of preparation time. During the preparation time, a clock will show you how much time is remaining.

For both tasks, you will have a specific amount of response time. During the response time, a clock will show you how much time is remaining.

When the response time has ended, you will automatically go on to the next question. You cannot return to previous questions.

Your cue to start speaking will always be this tone.



### Speaking Part Directions: Conversation

You will participate in a simulated conversation. Each time it is your turn to speak, you will have 20 seconds to record. You should respond as fully and as appropriately as possible.

There will be four times when it is your turn to speak.

You will now begin this part.

# 2012 AP® JAPANESE LANGUAGE AND CULTURE FREE-RESPONSE QUESTIONS

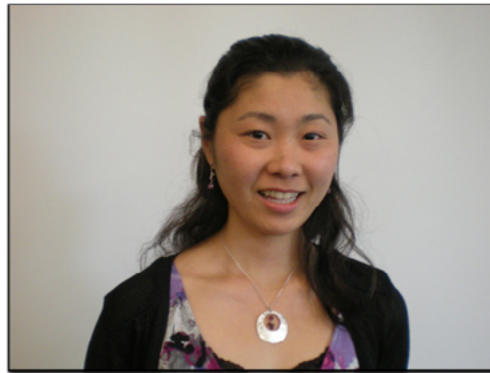
## AP Japanese Language & Culture - Speaking



Question 1 of 5

Directions: You will participate in a simulated conversation. Each time it is your turn to speak, you will have 20 seconds to record. You should respond as fully and as appropriately as possible.

You will have a conversation with Yumiko Tanaka, your friend, about club activities.



RESPONSE TIME

00 : 00 : 20

## 2012 AP<sup>®</sup> JAPANESE LANGUAGE AND CULTURE FREE-RESPONSE QUESTIONS

The following text is the recording script for the audio portion of the task shown in the previous screen image. Students heard this audio during the exam administration, but this text does not appear in the exam and is provided here for reference only.

**N:** You will have a conversation with Yumiko Tanaka, your friend, about club activities.

### Speaking Question 1 of 5

**WA:** クラブのボランティア活動のことなんだけど、公園のそうじをするのと小学生の勉強を手伝ってあげるのとどっちにする？

[TONE]

(20 seconds)

### Speaking Question 2 of 5

**WA:** 毎週一回することになってるんだけど、何曜日の何時にしようか。

[TONE]

(20 seconds)

### Speaking Question 3 of 5

**WA:** その曜日と時間がいいのはどうして？

[TONE]

(20 seconds)

### Speaking Question 4 of 5

**WA:** じゃ、今度のクラブのミーティングで、今話したことをみんなに伝えてくれる？

[TONE]

(20 seconds)





### Speaking Part Directions: Cultural Perspective Presentation

Imagine that you are making an oral presentation to your Japanese class. First, you will read and hear the topic for your presentation. You will have 4 minutes to prepare your presentation. Then you will have 2 minutes to record your presentation. Your presentation should be as full as possible.

You will now begin this part.

# 2012 AP® JAPANESE LANGUAGE AND CULTURE FREE-RESPONSE QUESTIONS

## AP Japanese Language & Culture - Speaking



### Question 5 of 5

Directions: Imagine that you are making an oral presentation to your Japanese class. First, you will read and hear the topic for your presentation. You will have 4 minutes to prepare your presentation. Then you will have 2 minutes to record your presentation. Your presentation should be as full as possible.

Present your own view or perspective on popular places to visit in Japan. Discuss at least FIVE aspects or examples of popular places to visit in Japan.

Begin with an appropriate introduction, give details, explain your own view or perspective, and end with a concluding remark.

Preparation Time: 240 Seconds  
Response Time: 120 Seconds

**PREPARATION TIME**

**00 : 04 : 00**

## 2012 AP® JAPANESE LANGUAGE AND CULTURE FREE-RESPONSE QUESTIONS

The following text is the recording script for the audio portion of the task shown in the previous screen image. Students heard this audio during the exam administration, but this text does not appear in the exam and is provided here for reference only.

### Speaking Question 5 of 5

**N:** Present your own view or perspective on popular places to visit in Japan. Discuss at least FIVE aspects or examples of popular places to visit in Japan.

Begin with an appropriate introduction, give details, explain your own view or perspective, and end with a concluding remark.

**N:** You have four minutes to prepare your presentation.

(240 seconds)

**N:** You have two minutes to record your presentation.

[TONE]

(120 seconds)